

# Mirai



**Please Note: information is accurate as at January 2025.**

Specification and imagery are indicative and should only be used as a guide. Vehicle and accessory specification, features, colour and trim may differ at the time of vehicle delivery.





# OH WHAT A FEELING

You'll feel it with every drive. In every twist and every turn. It's our unwavering commitment to move you, not only today, but well into tomorrow as we relentlessly reimagine the future of mobility.

With our eyes on the horizon, we're committed to creating a future where all of humankind is empowered with the freedom to move.

03 Introduction  
04 About Hydrogen  
06 Fuel Cell Technology  
07 Performance  
08 Exterior Design  
09 Refuelling

10 Interior Design  
11 Interior Tech  
12 Specifications  
13 Colour and Trim  
14 Toyota Safety Sense  
16 Disclaimers



# Fuelling a better future with hydrogen



The Toyota Mirai is a zero CO<sub>2</sub> tailpipe emissions vehicle, which is powered by one of the world's most abundant resources, hydrogen. This dynamic advancement in technology produces admirable performance yet emits nothing more than water vapour from its tailpipe.

Mirai is currently only available in limited numbers for business fleet to lease. There is only one Toyota owned hydrogen refueller in Altona, Victoria.





# The power of hydrogen



# Powerful and proven energy



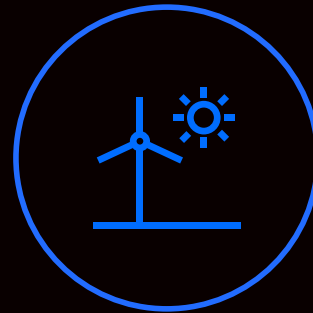
## Hydrogen is universal

As one of the world's most abundant sources of energy, hydrogen is a pure and simple fuel. It can be found virtually everywhere and be produced from organic material, waste, liquids and gases containing hydrogen – even from water.



## No CO<sub>2</sub> tailpipe emissions

Hydrogen is lighter than air and leaves no carbon emissions.



## Hydrogen production

Hydrogen can be produced from water via electrolysis using renewable energy or gasification from organic material (such as crops and organic waste) and from non-renewable sources like natural gas.

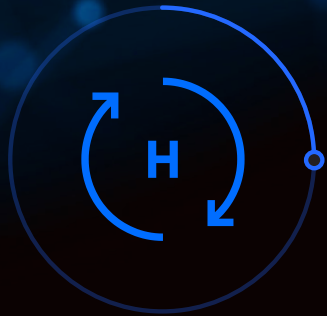


## Safely stored as liquid or gas

Hydrogen storage has now advanced to ensure it is safely kept in either liquid or gas form. Using the latest technology and pumping systems also helps ensure the safety of hydrogen in maintaining a continuous and reliable supply.



# How a Fuel Cell works



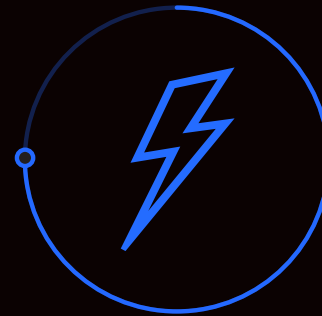
## 1. Hydrogen

Hydrogen is stored inside three triple-layer carbon-fibre wrapped and polymer lined tanks that are incredibly strong and can store enough fuel for extended driving.



## 2. Oxygen

The large front grille takes in the air from the atmosphere and delivers it to the Fuel Cell.



## 3. Electricity

In the Fuel Cell, hydrogen and oxygen combine in a closed chemical reaction to create the electricity required to power the vehicle.



## 4. Emits only water

The only by-product of a Fuel Cell Electric Vehicle using oxygen and hydrogen is water vapour that is released from the tailpipe of the vehicle.



# Pure performance



## Impressive power

The Fuel Cell and lithium battery work seamlessly together to produce up to 134kW of lively power and 300Nm of torque from the electric motor. Combined with rear wheel drive, Mirai delivers instant acceleration for a truly spirited and highly responsive drive.



## Long distance capability

With three storage tanks, Mirai offers a driving range up to 650km<sup>1</sup> obtained in laboratory tests and does not reflect real world driving.



## Fast and simple refuelling

With the three hydrogen tanks taking around 3 to 5 minutes to refill using a commercial refueller, Mirai will have you back on the road in no time.



# Pure elegance

Mirai, meaning 'future', demonstrates how elegance can harmonise effortlessly with innovation. Aerodynamically designed and inspired by the fluidity of water, the dynamically sleek exterior boasts large 19" alloy wheels placed around a rigid chassis. The wide front and rear stance combine with a low centre of gravity to help ensure surefooted control, while the large eye-catching front grille allows abundant oxygen intake to help power the Fuel Cell.





# Refuelling

At a hydrogen refuelling pump, instead of inserting the nozzle into the filler you simply place it over the top, then lock it in place and squeeze the handgrip. To prevent hydrogen from leaking, the pump will not start unless the nozzle is properly engaged. The Mirai computer will also disable the vehicle and communicate with the pump to help ensure a safe and efficient fill. Once complete, simply release the nozzle and return to the holder.







## Pure space

Breathe easy. Inside Mirai you'll discover a fresh dimension of dynamic calm. The metallic silver dash accents with contrasting synthetic leather edges wraps purposely around the driver to provide the ultimate driving cockpit, with the centralised instrument cluster and switches carefully placed to provide optimal control. The front passenger side has been designed to provide a more expansive space to relax and enjoy the journey.

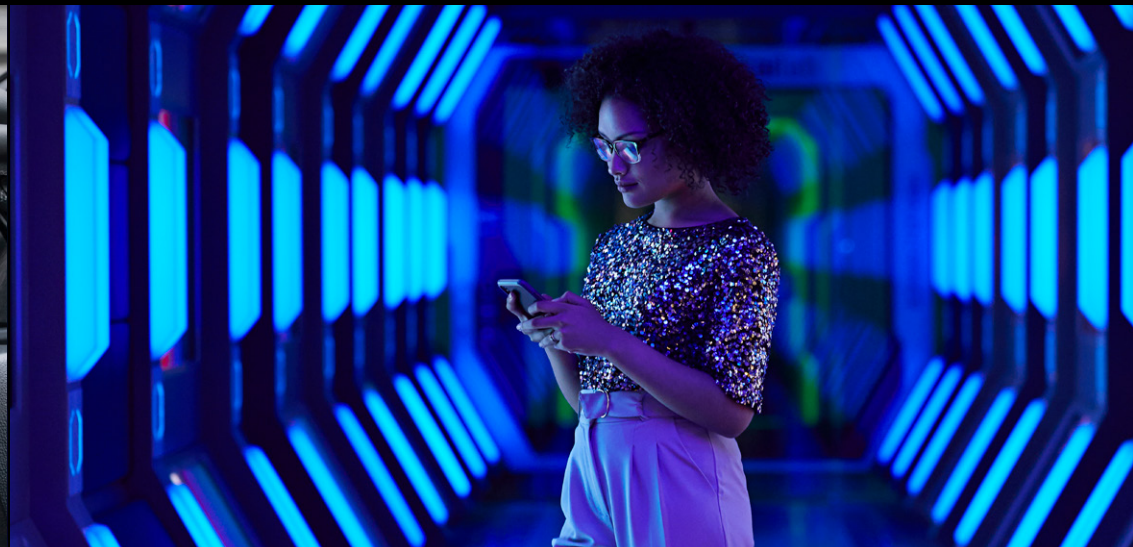
You'll be immersed in premium seats with multi-way power adjustment. Take hold of the leather accented steering wheel to enjoy an exciting and pure driving experience like no other.



# Pure thinking

The technology inside every Mirai is designed to help deliver pure enjoyment through smarter and more intuitive connectivity. The 12.3" Toyota Multi Operation Touch (TMOT) widescreen display controls multiple functions including the 14-speaker premium JBL<sup>®2</sup> audio system, the DAB+ digital radio,<sup>3</sup> satellite navigation<sup>4</sup> and air conditioning. Seamlessly connect with your smartphone using wireless Apple CarPlay<sup>®5</sup> and Android Auto<sup>™,6</sup> to play your favourite music, take calls, send texts and more using voice recognition commands.

The 8" TFT colour display provides digital information on speed, fuel level, ambient temperature and more. It incorporates a 4.2" Multi-Information Display (MID) that delivers further vehicle, trip, audio and economy detail.





# Mirai



- Hydrogen Fuel Cell
- Electric motor – 134kW power, 300Nm torque
- 19" alloy wheels
- 12.3" multimedia display
- Toyota Safety Sense - including blind spot monitor, Lane Departure Alert, Lane Trace Assist, Intersection Collision Avoidance Support, Emergency Steering Assist, Auto emergency brake, Road Sign Assist (speed signs only) and Emergency Driving Stop System
- 14-speaker premium JBL<sup>®2</sup> audio system
- Wireless Apple Carplay<sup>®5</sup> and Android Auto<sup>™,6</sup>
- Toyota Connected Services<sup>7</sup> including Stolen Vehicle Tracking<sup>9</sup> (SVT), Automatic Collision Notification<sup>8,10</sup> (ACN) and SOS Emergency Call<sup>8,11</sup>
- 8" TFT meter incl. 4.2" Multi-Information Display (MID)
- 4x USB ports<sup>12</sup> – 2x front and 2x rear
- LED headlamps
- LED Daytime Running Lamps (DRLs)
- LED rear combination lamps
- Rain sensing wipers
- Electronic Park Brake
- Electrochromatic mirror
- Leather accented steering wheel
- Synthetic leather seats
- Dual zone air conditioning
- Heated and electronically retractable exterior side mirrors
- Tyre pressure warning
- Smart entry and start system
- Power adjustable seats  
Driver 8-way, passenger 4-way
- Satellite navigation<sup>4</sup>
- Rear privacy glass
- DAB+ digital radio<sup>3</sup>



# Colour your Mirai

From powerful statements in style to smooth and subtle tones, Mirai has a range of colours<sup>13</sup> to match your mood. Force Blue has been developed exclusively for Mirai and features a uniquely deeper, eye catching colour saturation. Inside you'll enjoy the refined ambience of a premium yet sporty black trim and finish.



● Arctic White<sup>13</sup> 090



● Silver Rush<sup>13</sup> 1J6



● Liquid Metal<sup>13</sup> 1L5



● Tarmac Black<sup>13</sup> 219



● Force Blue<sup>13</sup> 8Y7



● Dynamic Blue<sup>13</sup> 8S6



● Feverish Red<sup>13</sup> 3U5

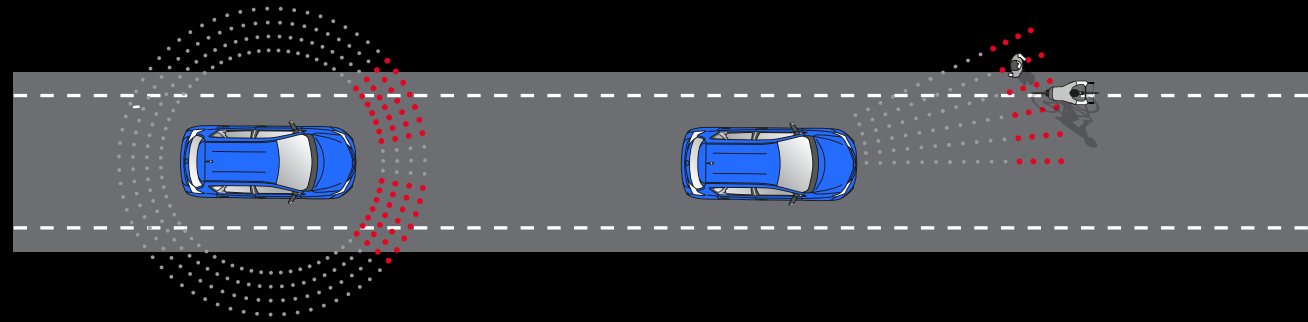
COLOUR AND TRIM GUIDE		Arctic White <sup>13</sup>	Silver Rush <sup>13</sup>	Liquid Metal <sup>13</sup>	Tarmac Black <sup>13</sup>	Force Blue <sup>13</sup>	Dynamic Blue <sup>13</sup>	Feverish Red <sup>13</sup>
Grade	Interior Seat Trim	●	●	●	●	●	●	●
Mirai	Black synthetic leather accents (EA20)	●	●	●	●	●	●	●



# Toyota Safety Sense

At Toyota, we believe it's simply not enough to say "safety comes first" – we prove it. That's why, in our ongoing pursuit of creating ever safer cars, now and into the future, we developed Toyota Safety Sense (TSS).<sup>14</sup> A suite of active safety features designed to protect us all through helping support safe driving.

Mirai features TSS driver assistance technologies, aiming to recognise and help avoid certain hazards and collisions, giving you and your passengers greater peace of mind wherever you're headed. Please visit [toyota.com.au](http://toyota.com.au) for vehicle and specification information.



## Lane Trace Assist

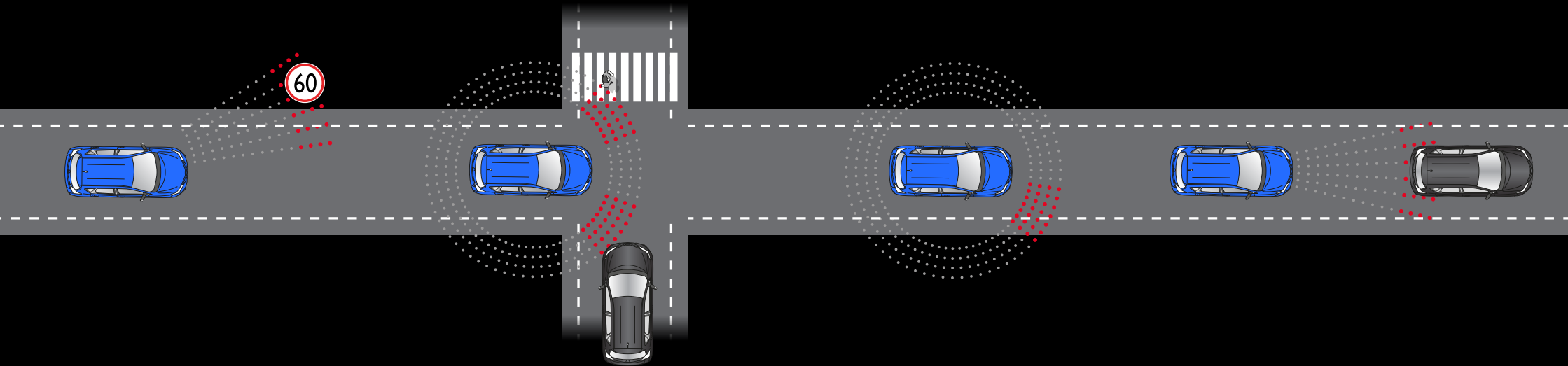
When driving on highways and freeways, Lane Trace Assist uses a camera to detect lane markings when cruise control is active. It is designed to alert you and provide steering assistance to help avoid drifting, and keep you centred in your lane.<sup>14</sup>

## Pre-Collision Safety (PCS) system with pedestrian and daylight cyclist detection

Pre-Collision Safety system with pedestrian and daylight cyclist detection is a multi-stage warning system. Using an integrated camera and radar to help detect other vehicles in front of you, the PCS is designed to assist the driver where there is a likelihood of frontal collision with cars and pedestrians during day or night, or cyclists during the daytime. PCS includes a visible and audible alert of possible collisions, additional braking force to assist when you're braking, and if a collision appears to be unavoidable automatic braking to help mitigate impact.<sup>14</sup>

Toyota  
Safety  
Sense





## Road Sign Assist (Speed signs only)

Road Sign Assist was developed to help recognise certain road speed signs and provide information to you. It displays the most recently recognised speed limit on the Multi Information Display.<sup>14</sup>

## Intersection Turn Assist

Intersection Turn Assist helps prevent accidents at intersections by detecting oncoming cars and pedestrians crossing the street when the vehicle is turning.<sup>14</sup>

## Lane Departure Alert with steering assist

Lane Departure Alert with steering assist is designed to help prevent vehicles drifting from their lane by monitoring road markings, and providing a visible and audible alert should it detect any deviation from the lane. It may also apply additional steering force if needed to help you stay in your lane.<sup>14</sup>

## Active Cruise Control

Active Cruise Control is designed to help keep a constant distance between vehicles. It uses a millimetre wave radar to monitor the gap between your vehicle and the one in front, automatically accelerating or slowing down when needed to help you maintain a set distance.<sup>14</sup>



# Disclaimers and Notice

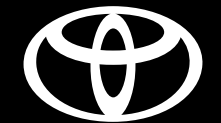
- 1 Results achieved for Mirai SL in automatic transmission in ADR81/02 combined drive cycle fuel consumption testing. Consumption rate of 0.7kg/100kms achieved in extra urban cycle. Results produced in laboratory test conditions, using new sample vehicles without fitment of accessories/customisation, and may not be replicable.
- 2 JBL® is a registered trademark of Harman International Industries, Incorporated.
- 3 Coverage dependent on vehicle location.
- 4 Coverage varies based on vehicle location.
- 5 CarPlay® and Siri® are trademarks of Apple, Inc. registered in the U.S. and other countries. Requires compatible device, USB connection or Bluetooth® connection for vehicles fitted with wireless CarPlay®, mobile data, network reception and GPS signal. Mobile usage at user's cost. Apps subject to change. For details see [toyota.com.au/connected](https://toyota.com.au/connected)
- 6 Android Auto™ is a trademark of Google LLC. Requires compatible device, USB connection or Bluetooth® connection for vehicles fitted with wireless CarPlay®, mobile data, network reception and GPS signal. Mobile usage at user's cost. Apps subject to change. For details see [toyota.com.au/connected](https://toyota.com.au/connected)
- 7 Connected Services complimentary period ends 3 years from delivery date. Fees may apply thereafter. See [toyota.com.au/connected/plans-packages](https://toyota.com.au/connected/plans-packages)  
Not available outside Australia, if services disabled or terminated, or after 2033/Telstra 4G sunset (whichever comes first). Dependent on 3G/4G enabled DCM, GPS signal strength, mobile network coverage and other factors outside Toyota's control which can limit ability or functionality of system. Requires compatible device and app installation, third party info and mobile data. Mobile usage at user's cost. Check [toyota.com.au/connected](https://toyota.com.au/connected) or your Owner's Manual for explanation of limitations. Features subject to change. Please drive safely.
- 8 Driver assist feature only. Not a substitute for safe driving practices. Dependent on operational related components and other factors outside Toyota's control which can limit ability or functionality of system. Check your Owner's Manual for explanation of limitations. Please drive safely.
- 9 SVT – Owner/driver required to obtain Police report. Dependent on sufficient battery power. Vehicle location information, if available, only provided to Police. Vehicle recovery not guaranteed. For details, visit [toyota.com.au/connected/faq-support](https://toyota.com.au/connected/faq-support)
- 10 ACN – Only activates if vehicle's DCM detects airbag deployment or impact sensor notification.
- 11 SOS – Only operates if vehicle's SOS button is pressed and vehicle ignition is on.
- 12 Compatibility and functionality varies depending on device.
- 13 Paint featured is an optional extra at additional cost.
- 14 Driver assist feature. Only operates under certain conditions. Check your Owner's Manual for explanation of limitations. Please drive safely.

## IMPORTANT NOTICE – PLEASE READ:

Toyota Australia uses its best endeavours to ensure material is accurate at the time of publishing. All information must be confirmed with your Toyota Dealer at the time of ordering, as specifications, applicability and availability may change over time. Colours depicted are a guide only and may vary from actual colours due to the printing/display process. Toyota Australia reserves the right to change and/or discontinue, without notice, models, prices, colours, materials, equipment, specifications. To the extent permitted by law, Toyota Australia will not be liable for any damage or loss incurred from relying on the

information and images contained in this material. Distributed nationally (other than in Western Australia) by Toyota Motor Corporation Australia Limited ABN 64 009 686 097. Material distributed in Western Australia by or on behalf of Prestige Motors Pty Ltd (for vehicles) and by Eastpoint Pty Ltd (for parts/accessories). Toyota Australia makes no warranties regarding (and will not be liable for) accuracy of materials distributed in Western Australia. PROOF HQ: T2024-021987. TMC-008283. VERSION: JANUARY 2025.





TOYOTA